

# Ny forskning i Rygestopbasen

**Mette Rasmussen**

Seniorforsker

Clinical Health Promotion Centre,

WHO-CC

Parker Instituttet

# Forskning i Rygestopbasen

- Aktuel forskning og foreløbige resultater
  - Gigt
  - Diabetes
  - Cancer
  - Dødelighed
- Udgivelser
  - Rigere uden røg
  - Registerdata i dansk sundhedsforskning

# Gigt og rygestop



## Smoking Cessation Rates Among Patients with Rheumatic and Musculoskeletal Diseases Following the 'Gold Standard Program' (GSP): A prospective analysis from the Danish Smoking Cessation Database

Monika Laugesen  
Mette Rasmussen  
Robin Christensen  
Hanne Tønnesen  
Henning Bliddal

Mette Rasmussen, Clinical Health Promotion Centre,  
Parker Institutet, BFH

Smoking Cessation Rates Among Patients with Rheumatic and Musculoskeletal Diseases Following the 'Gold Standard Program' (GSP): A prospective analysis from the Danish Smoking Cessation Database

Monika Laugesen, MD<sup>1</sup>  
Mette Rasmussen, MSc, PhD<sup>1,2</sup>  
Robin Christensen, BSc, MSc, PhD, professor<sup>1,3</sup>  
Hanne Tønnesen, MD, DMSc, professor<sup>1,4</sup>  
Henning Bliddal, MD, DMSc, professor<sup>1,3</sup>

- 1) Clinical Health Promotion Centre, WHO-CC, The Parker Institute, Bispebjerg and Frederiksberg Hospital, University of Copenhagen, Copenhagen, Denmark.
- 2) Clinical Health Promotion Centre, WHO-CC, Department of Health Sciences, Lund University, Lund, Sweden.
- 3) Section for Biostatistics and Evidence-Based Research, the Parker Institute, Bispebjerg and Frederiksberg Hospital, Copenhagen, Denmark.
- 4) Research Unit of Rheumatology, Department of Clinical Research, University of Southern Denmark, Odense University Hospital, Denmark.

\*Co-senior authors (contributed equally to the project and the following manuscript)

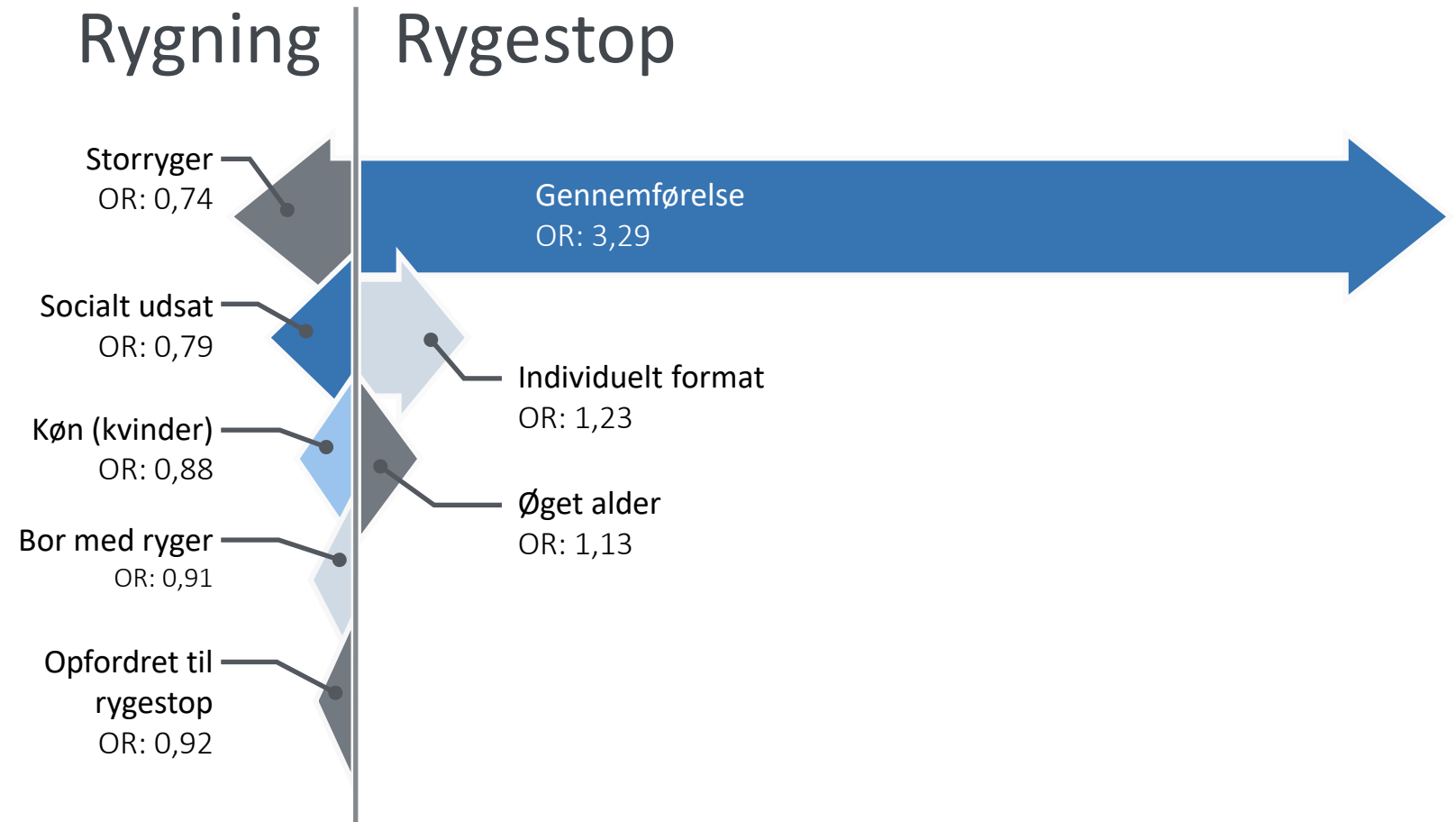
Corresponding Author:  
Address reprint requests to Professor Henning Bliddal, The Parker Institute, Bispebjerg and Frederiksberg Hospital, Denmark.  
Nordre Fasanvej 57 (Veje 8, Indgang 19), DK-2000 Copenhagen F, Denmark. e-mail: Henning.Bliddal@regionh.dk  
Tel: +45 3816 4151/Fax: +45 3816 4159/ORCID ID: <https://orcid.org/0000-0002-7951-1668>

ML: [monika.laugesen@hotmail.com](mailto:monika.laugesen@hotmail.com)  
MR: [mette.rasmussen.03@regionh.dk](mailto:mette.rasmussen.03@regionh.dk)  
RC: [robin.christensen@regionh.dk](mailto:robin.christensen@regionh.dk)  
HT: [hanne.tonnesen@regionh.dk](mailto:hanne.tonnesen@regionh.dk)

Word count, excluding title page, abstract, references, figures and tables: 3 589

# Gigt og rygning

- Der var ingen forskel i succesraten mellem rygere med og uden gigt



Mette Rasmussen, Clinical Health Promotion Centre,  
Parker Institutet, BFH

# Type 2 diabetes

Type 2 diabetes



25 %

Ingen diabetes



25 %

## Smoking Cessation Intervention in Patients with Type 2 Diabetes – a Cohort Study

---

Rizwan S. Quader  
Mette Rasmussen  
Hanne Tønnesen

Mette Rasmussen, Clinical Health Promotion Centre,  
Parker Instituttet, BFH

# Cancer og rygestop

- Sammenligne stoprater mellem socialt udsatte og ikke socialt udsatte rygere med cancer

## **The Gold Standard Programme (GSP) for Smoking Cessation: Effectiveness in smokers with and without cancer - A cohort study**

---

Susanne Vahr Lauridsen

Bente Thoft Jensen

Hanne Tønnesen

Susanne Oksbjerg Dalton

Mette Rasmussen

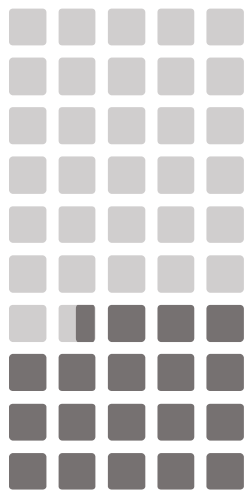
Mette Rasmussen, Clinical Health Promotion Centre,  
Parker Institutet, BFH

# Rygestopprater

- Rå rygestopprater
- Ingen opdeling i forhold til socialt udsatte rygere

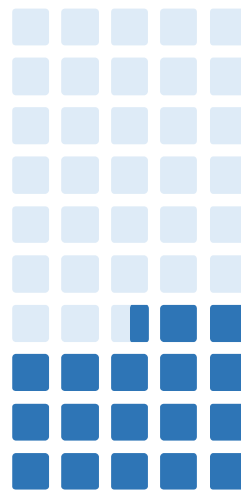
Ingen cancer

37 %



Med cancer

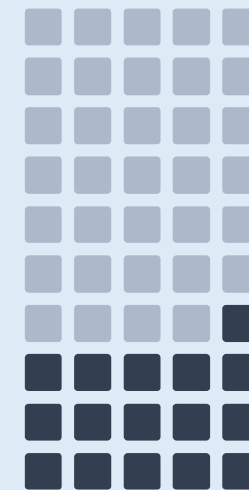
35 %



Med cancer

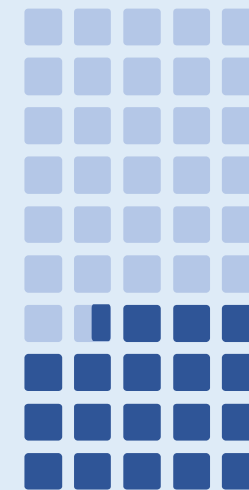
Rygerelateret

32 %



Anden

37 %



Mette Rasmussen, Clinical Health Promotion Centre,  
Parker Institutet, BFH

# Rygestop og dødelighed

**Evaluation of the effect of successful quitting following an intensive smoking cessation intervention on mortality of successful quitters compared to non-successful quitters using the Danish Smoking Cessation Database**

---

Rowan Ahmed

Mette Rasmussen

Hanne Tønnesen

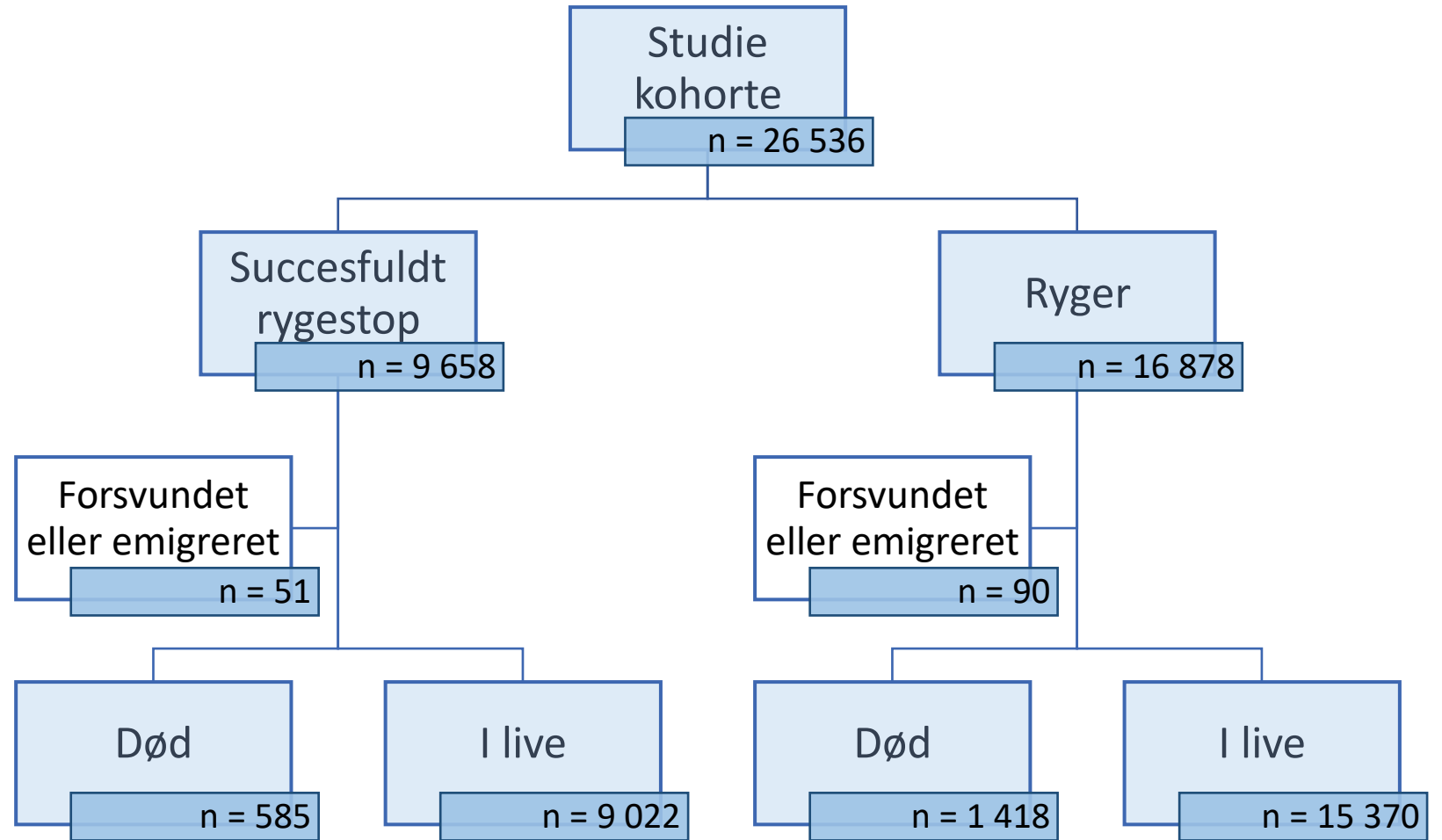
Mette Rasmussen, Clinical Health Promotion Centre,  
Parker Institutet, BFH

---

CLINICAL HEALTH PROMOTION CENTRE

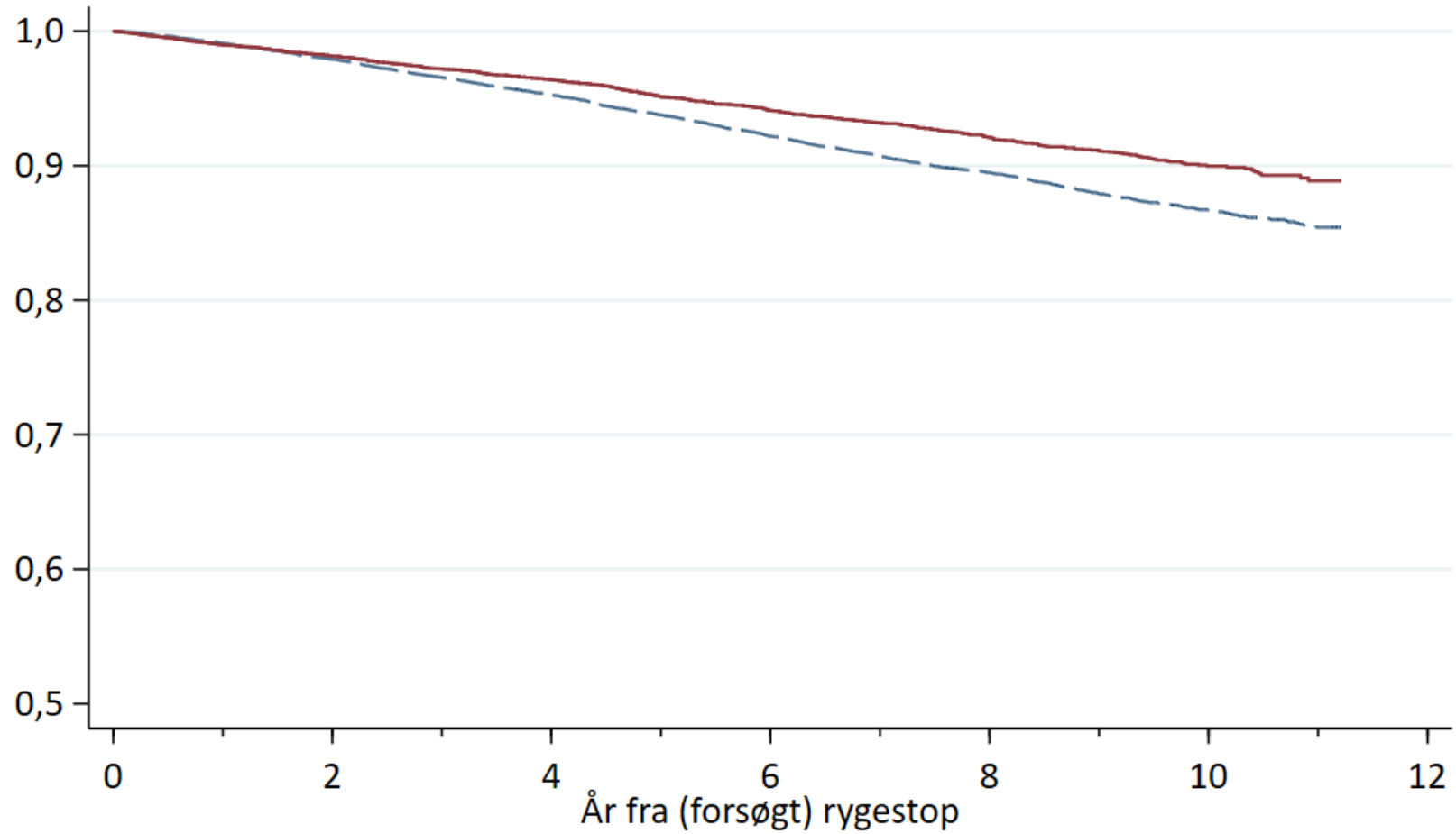
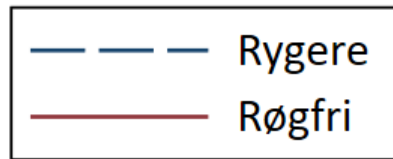


# Flowdiagram



Mette Rasmussen, Clinical Health Promotion Centre,  
Parker Institutet, BFH

# Overlevelse (Kaplan-Meier)



Mette Rasmussen, Clinical Health Promotion Centre,  
Parker Institutet, BFH

# Årets udgivelser

## Reference:

Preventive Medicine 2022:154:  
106865.

Online ahead of print

<https://doi.org/10.1016/j.ypmed.2021.106865>

## Are financial incentives more effective than health campaigns to quit smoking? A community-randomised smoking cessation trial in Denmark

Charlotta Pisinger  
Cecilie Goltermann Toxværd  
Mette Rasmussen



Mette Rasmussen, Clinical Health Promotion Centre,  
Parker Institutet, BFH

# Årets udgivelser



Preventive Medicine  
Volume 154, January 2022, 106865



Are financial incentives more effective than health campaigns to quit smoking? A community-randomised smoking cessation trial in Denmark

Charlotta Pisinger <sup>a, b, c, d, e</sup>, Cecilie Goltermann Toxværd <sup>a, e</sup>, Mette Rasmussen <sup>d, e</sup>

## Highlights fra "Rigere uden røg"

- Det er det først randomiserede forsøg der sammenligner økonomisk belønning med kampagner for rekruttering.
- Økonomisk belønning var ikke bedre end kampagner i forhold til at rekruttere rygere til rygestopforløb.
- Økonomisk belønning så ud til at være bedre i forhold til at opnå et succesfuldt rygestop på lang sigt.
- Sammenlignet med ikke at gøre noget var kampagner effektive i forhold til at øge rekruttering.
- Sammenlignet med ikke at gøre noget øgede økonomisk belønning chancen for et succesfuldt rygestopforsøg.

Mette Rasmussen, Clinical Health Promotion Centre,  
Parker Institutet, BFH

# Årets udgivelser

## Reference:

Udgivet Juli 2021

Tilgængelig på Sundhedsministeriets hjemmeside:

<https://sum.dk/publikationer/2021/juli/registerdata-i-dansk-sundhedsforskning>

## Registerdata i dansk sundhedsforskning

Eksempelsamling fra strategisk alliance for register- og sundhedsdata

---

Sundhedsministeriet



Mette Rasmussen, Clinical Health Promotion Centre,  
Parker Institutet, BFH

# Årets udgivelser

## Registerdata i dansk sundhedsforskning

Sundhedsministeriet

09-07-2021

Publikation Sundhedsdata



Eksemplarsamling fra strategisk alliance for register- og sundhedsdata.

Rapport viser eksempler på mulighederne ved forskning i de danske sundhedsdata.

## Rygestopbasens bidrag:

18

Rygestopprogrammer for socialt udsatte rygere virke

19

Rygestopprogrammernes effekt blandt rygere med alvorlig psykisk sygdom

20

Rygning og rygestop blandt gravide – kan vi gøre det bedre?

Mette Rasmussen, Clinical Health Promotion Centre,  
Parker Institutet, BFH

# Tak til



Thank You!



DE RYGERE DER HAR BIDRAGET MED DATA



RYGESTOPBASENS BRUGERE



BRUGERGRUPPEN, RÅDGIVENDE GRUPPE OG STYREGRUPPEN



FORSKERNE



RYGESTOPBASENS SEKRETARIAT

Mette Rasmussen, Clinical Health Promotion Centre,  
Parker Institutet, BFH